



**SPIERINGS
KRANEN**

Mark: **SPIERINGS** Type: **SK488-AT4**

Crane identification

Serial number: <input type="text"/>	Crane group : 3 as per NEN 2018 Loadspectrum : 2 as per NEN 2018 Classification : A as per NEN 2018 Stability : as per NEN 2022	Identificacation- number 93 tm	Max. load 8,0 tonne	Max. radius with max. load 12,76 m	Max. capacity 102 tm	Max. jib lenght 40m
Year of construction: _____						

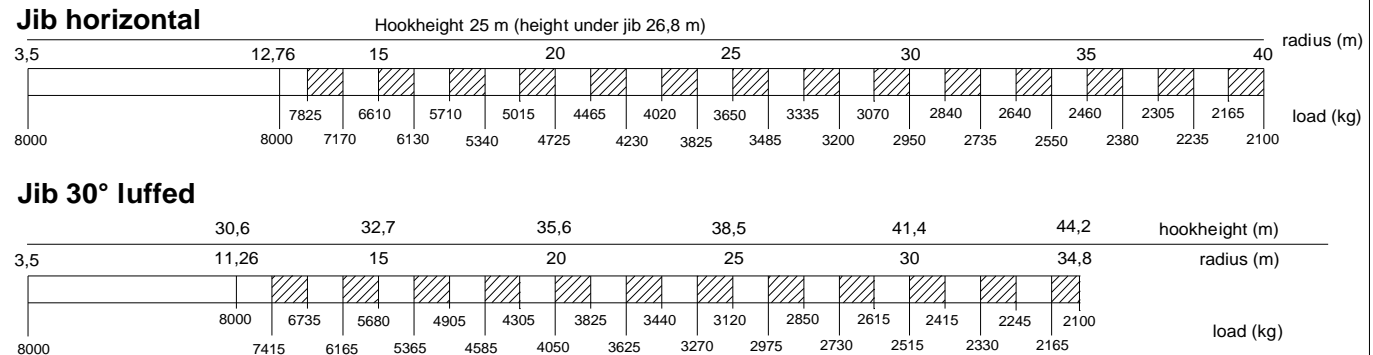
Speeds

Jib horizontal / jib 30° luffed

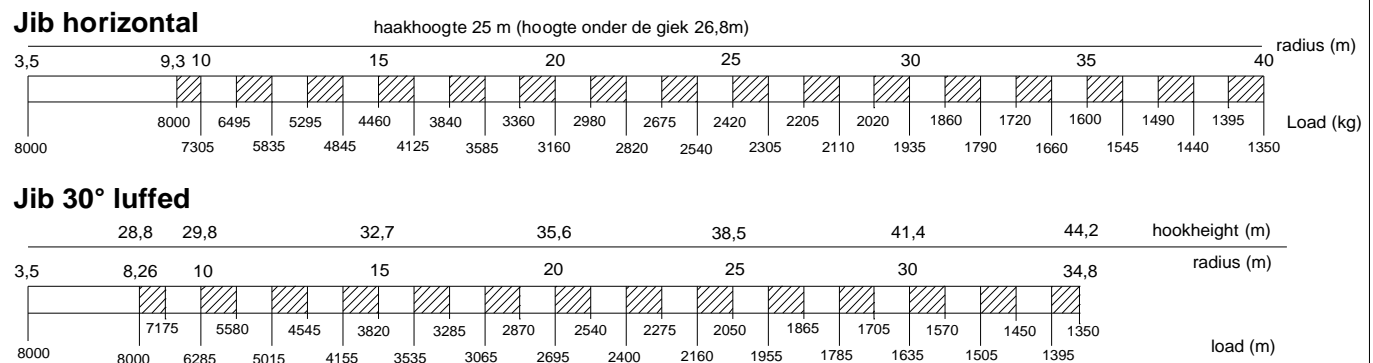
	m/min	kg
	18	8000
	27	4000
	40	2000
	75	0
	0 - 70 m/min	
	0-0,9 rpm	

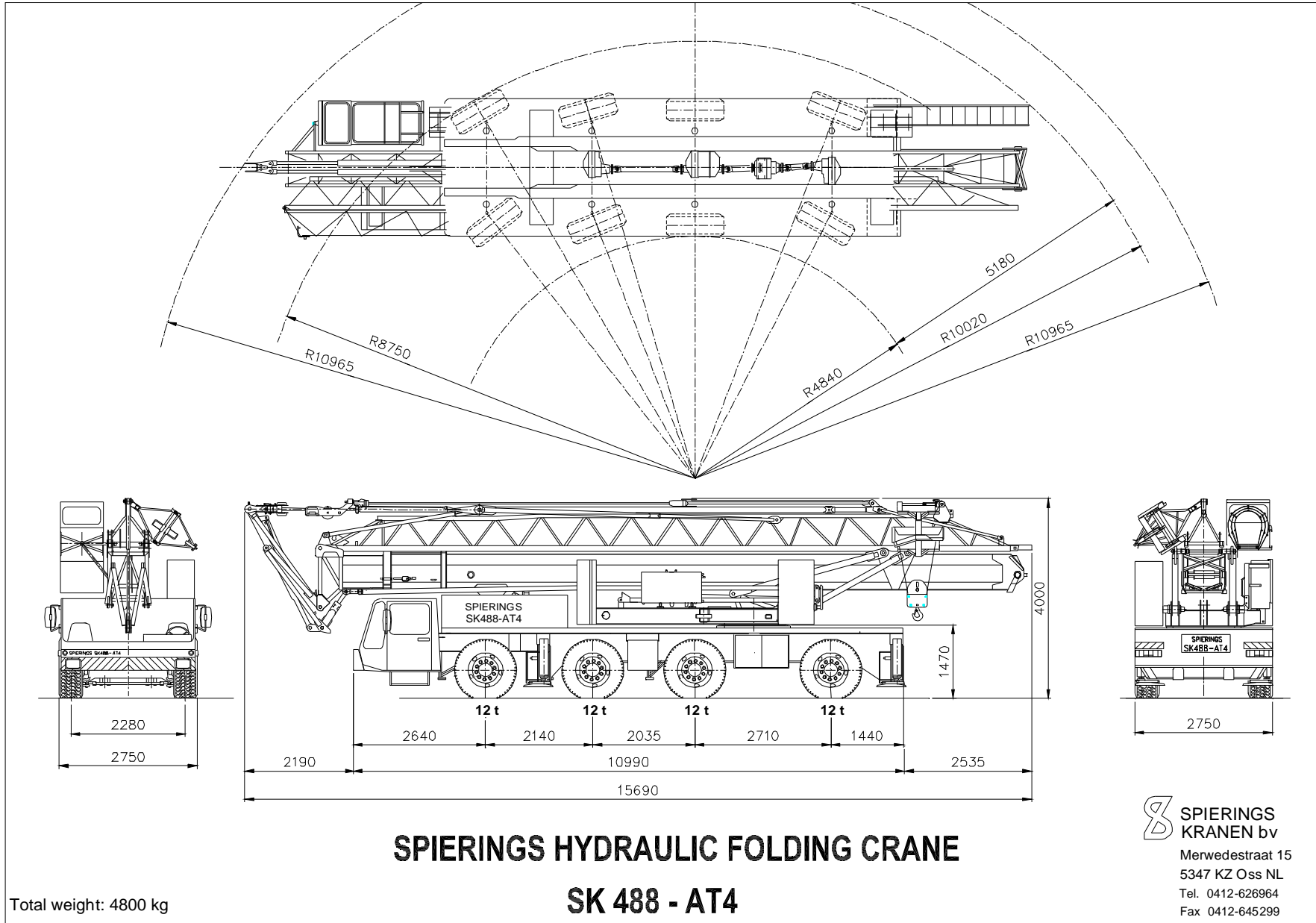
All motions with hydraulic proportional controls
Luffing the jib 30° can be controlled from crane cab or via remote control
Driving with erected tower and jib, only with the jib horizontal and positioned over the front carriage, platform locked to the carrier and the outriggers fully extended (max. inclination 2°)
Rated lifting capacity is net capacity
Crane equipped with full counterweight: 8700 kg
360° continuous slewing, with outriggers out and down
Operation allowed up to a wind force :
Outrigger position : 7,95 x 7,66 m
7 on the Beaufort scale (wind speed 17m/sec)
Outrigger position : 7,95 x 5,72 m
6 on the Beaufort scale (wind speed 14m/sec)
Sail area of the load max. 1,0 m² / tonne at a windforce of 7 on the Beaufortscale.
Operating temperature range from -15° to 40° C.
In all cases 2 parts of line
Max. line pull force 4000 kg
The crane should be folded in at a windforce >9 (21m/sec) or when not in use for a longer period

LIFTING CHART Outrigger spread 6,90 m x 6,84 m (up to wind force 7 on the beaufort scale)



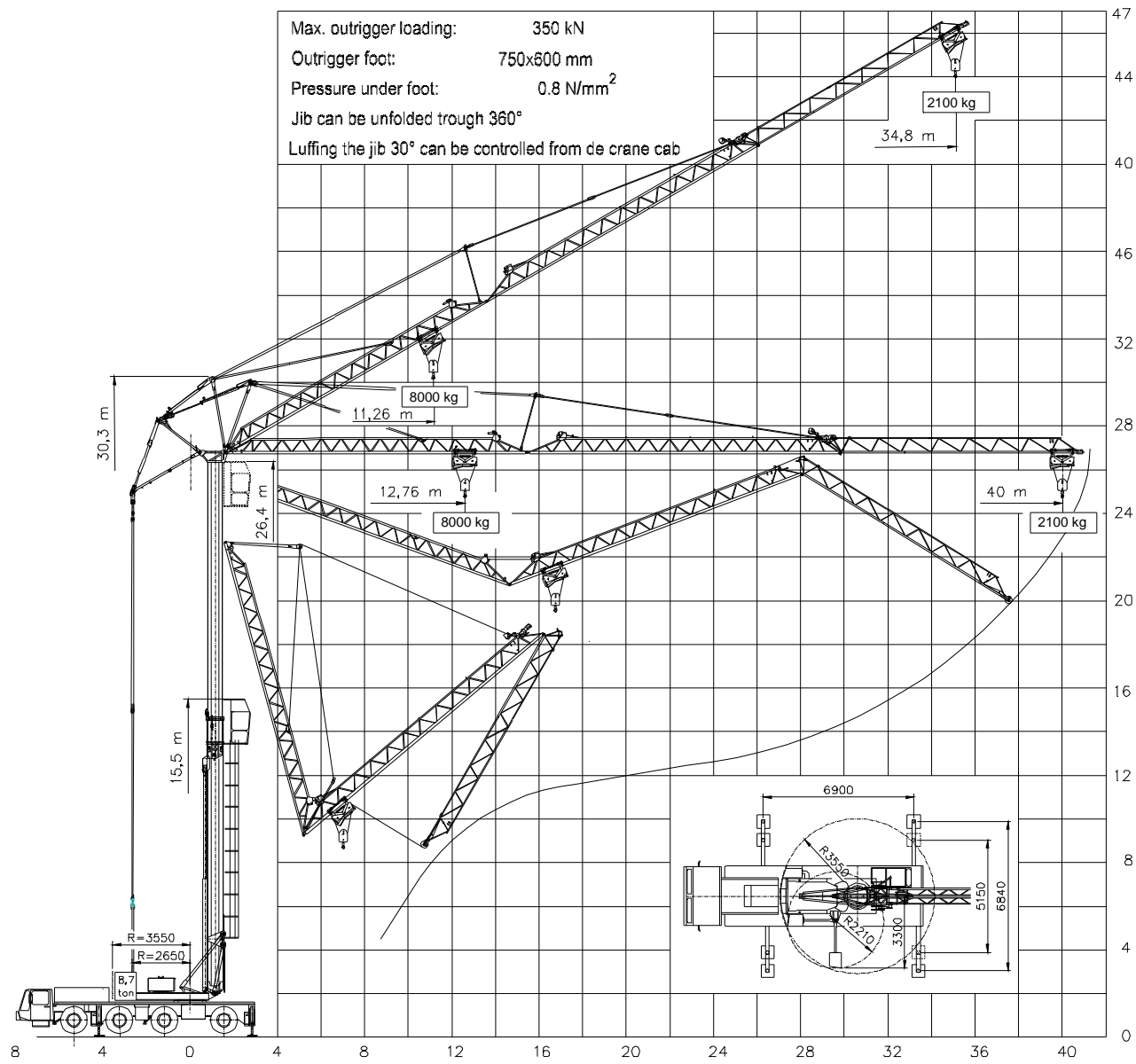
LIFTING CHART Outrigger spread 6,90 m x 5,15 m (up to wind force 6 on the beaufort scale)





Total weight: 4800 kg

Max. outrigger loading: 350 kN
 Outrigger foot: 750x600 mm
 Pressure under foot: 0.8 N/mm²
 Jib can be unfolded trough 360°
 Luffing the jib 30° can be controlled from de crane cab



SPIERINGS
HYDRAULIC FOLDING CRANE
SK 488 - AT4

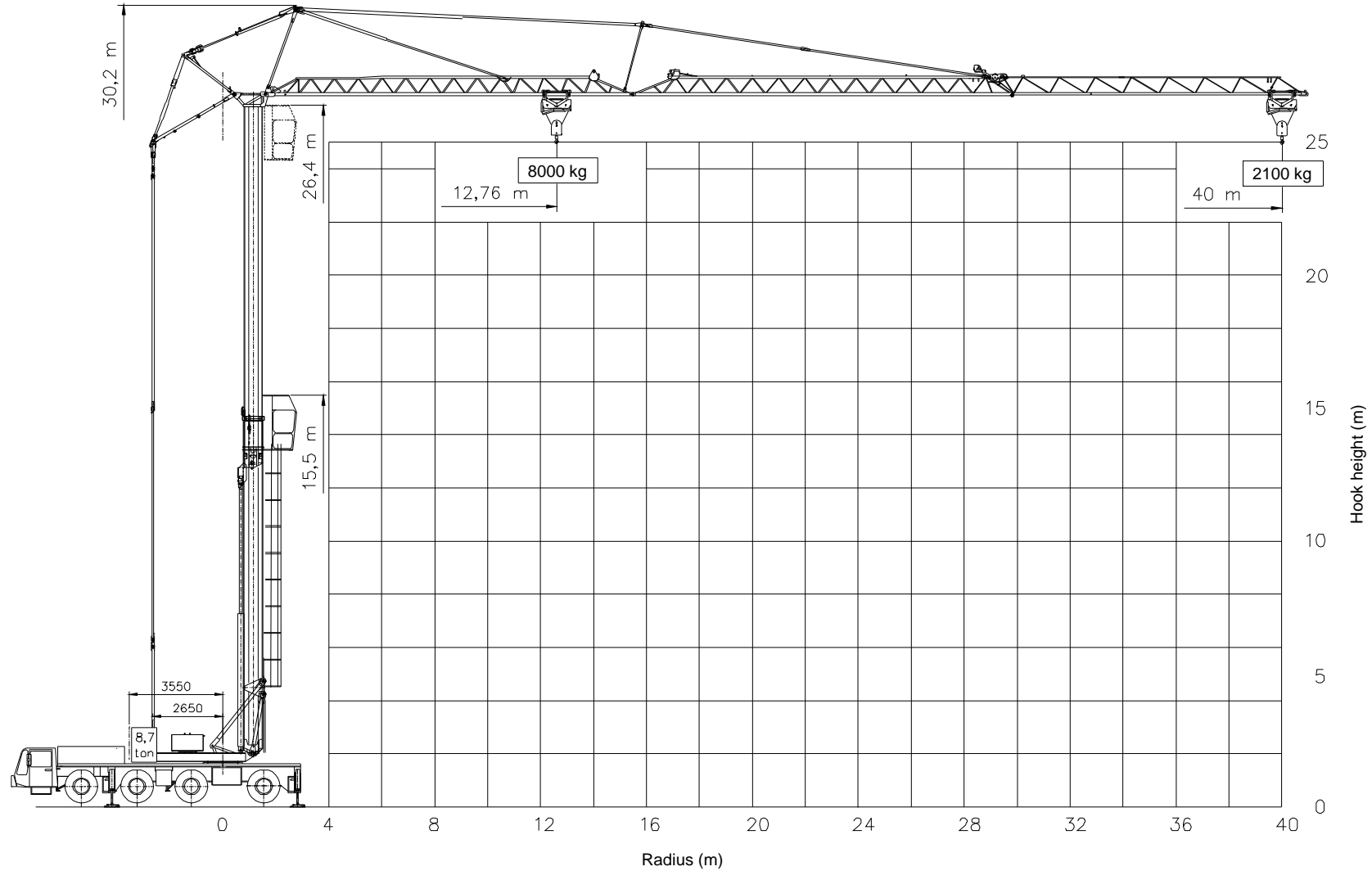


Merwedestraat 15
 5347 KZ Oss NL
 Tel. (31) 412 626954
 Fax (31) 412 645299



SPIERINGS HYDRAULIC FOLDING CRANE

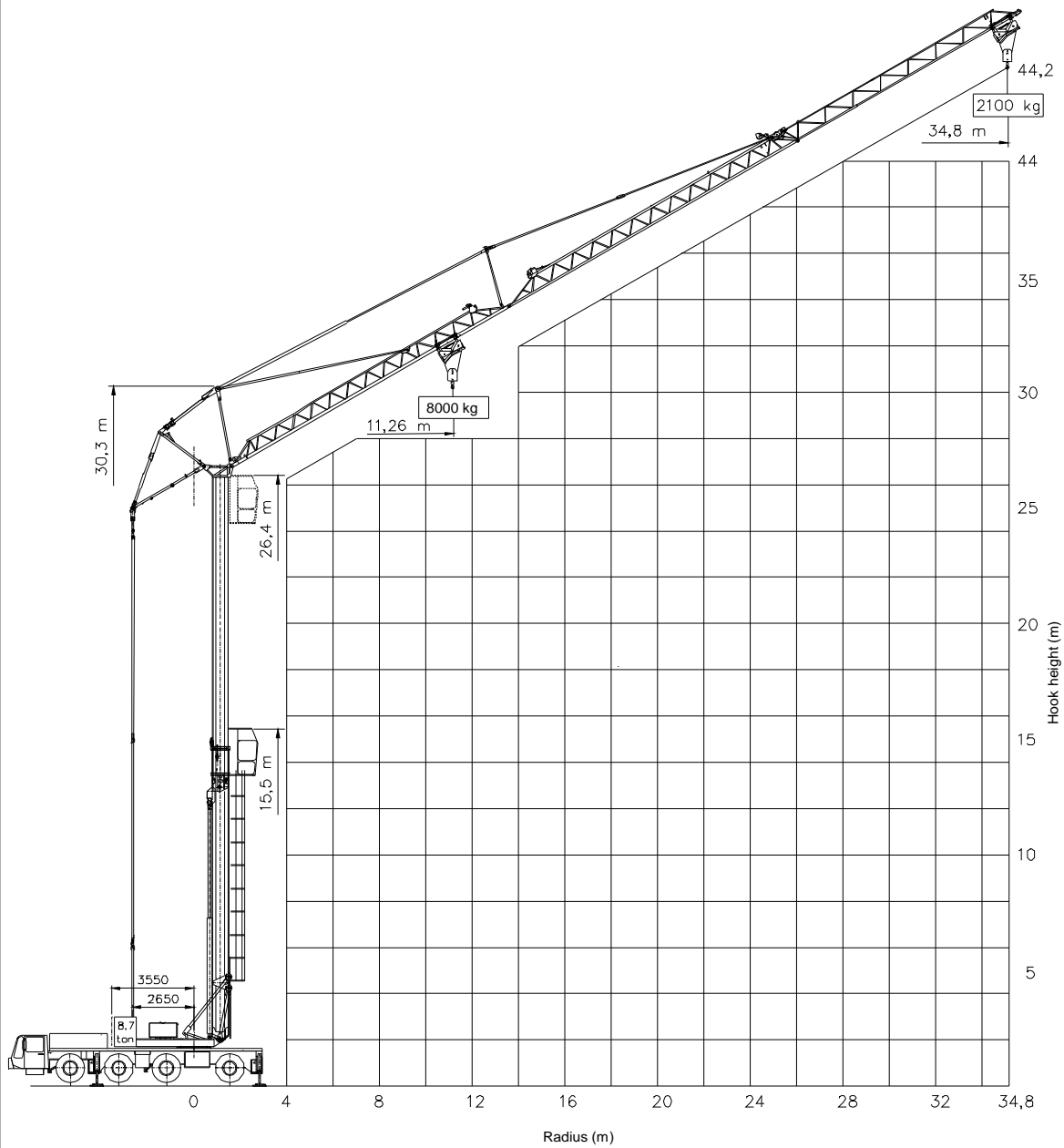
SK 488 - AT4

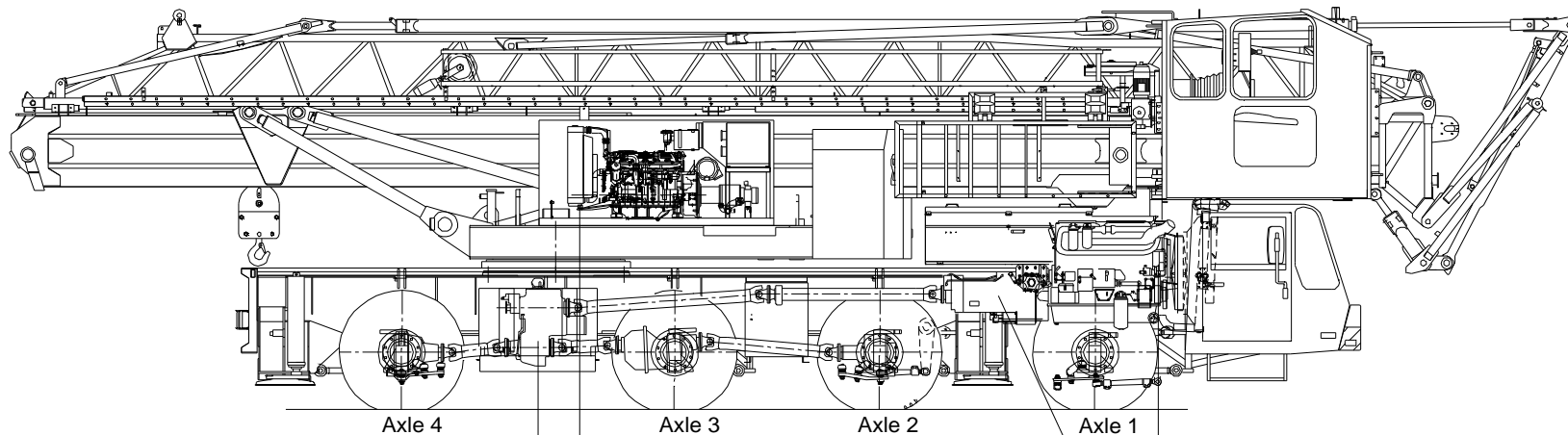




SPIERINGS HYDRAULIC FOLDING CRANE

SK 488 - AT4





Transferbor:
 STEYR VG2001/396
 Road gear $i = 0,89$
 Off road gear $i = 1,54$

Crane diesel engine
 DETROIT VM D706 IE2
 Power: 96 kW (2600 rpm)
 Torque: 480 Nm (1300 rpm)

Gearbox:
 ZF 16S151
 Manually operated
 + air power assistance
 + dry plate clutch

Carrier diesel engine:
 DAF XE 280 C (EURO 3)
 Power: 280 kW (1900 rpm)
 Torque: 1750 Nm (1500 rpm)

Axle 1 : Steer axle	Tyres	: 445/75 R22,5
Axle 2 : Steer drive axle (end reduction $i=6,57$)	Suspension: hydro-pneumatic on all axles; stroke cyl.	: 247 mm
Axle 3 : Drive axle, not steering (end reduction $i=6,57$)	Max. speed carrier	: 85 km/h
Axle 4 : Steer drive axle (end reduction $i=6,57$)	Min. speed carrier (engine at 1000 rpm)	: 1,6 km/h
	Overall weight	: 48.000 kg.

Drive train Spierings Folding Crane SK488-AT4

Changes subject to modifications